

רְבִיעִי-וְאֶזְלָא סוּף-פְּסוּק:

R' - vi' - i v' - az - la sof pa - suk

מוֹנַח סוּף-פְּסוּק:

mu - nakh sof pa - suk

מֵרְכָא סוּף-פְּסוּק:

mer - kha sof pa - suk

עֲלוּי סוּף-פְּסוּק:

i - luy sof pa - suk

מֵהַפֶּךְ שְׁלֹשֶׁת-קִטְנָה מוֹנַח סוּף-פְּסוּק:

Mah - pakh shal - she - let k' - ta - nah mu - nakh mu - nakh sof pa - suk

טִפְחָא מוֹנַח סוּף־פְּסוּק:

tip - kha\_\_\_ mu - nakh sof pa - suk\_\_\_

קַדְמָא טִפְחָא מוֹנַח סוּף־פְּסוּק:

kad - ma\_\_\_ tip - kha\_\_\_ mu - nakh sof pa - suk\_\_\_

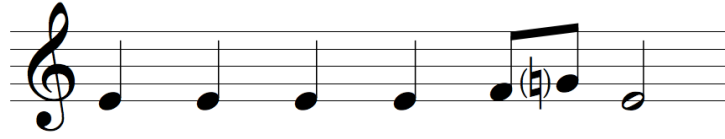
רְבִיעִי סוּף־פְּסוּק:

R' - vi' - i\_\_\_ sof pa - suk\_\_\_

רְבִיעִי מוֹנַח סוּף־פְּסוּק:

R' - vi' - i\_\_\_ mu - nakh sof pa - suk\_\_\_

מוֹנֵחַ מוֹנֵחַ אֶתְנַחְתָּא



mu - nakh mu - nakh et - nakh - ta

מֵהַפֶּךְ-לְגַרְמִיָּה | מוֹנֵחַ מוֹנֵחַ אֶתְנַחְתָּא



Mah - pakh l' - gar-meh mu - nakh mu - nakh et - nakh - ta

דְּחֵי אֶתְנַחְתָּא



De - khi \_\_\_\_\_ et - nakh - ta

דְּחֵי מוֹנֵחַ אֶתְנַחְתָּא



De - khi \_\_\_\_\_ mu - nakh et - nakh - ta

דְּחִי מִרְכָּא אֶתְנַחְתָּא

Musical notation for the first line. It features a treble clef and a single sharp (F#) in the key signature. The melody consists of a quarter note G4, followed by a triplet of eighth notes (A4, B4, C5) with a '3' above them, then a quarter note D5, a quarter note E5, and a quarter note F#5. The lyrics 'De - khi mer - kha et - nakh - ta' are written below the notes, with a horizontal line under 'khi'.

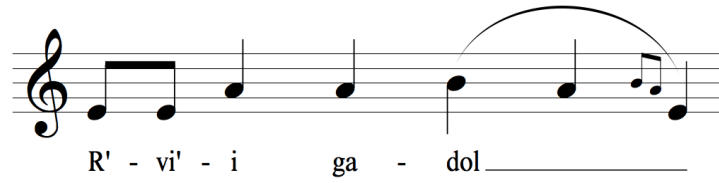
De - khi \_\_\_\_\_ mer - kha et - nakh - ta

צְנוּר מִרְכָּא אֶתְנַחְתָּא

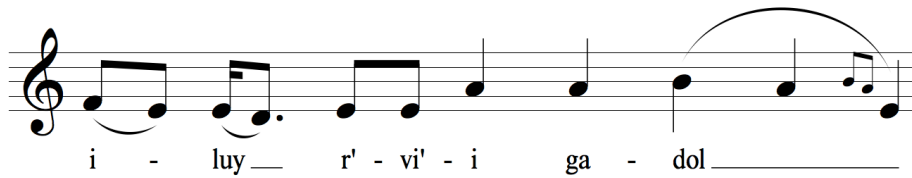
Musical notation for the second line. It features a treble clef and a single sharp (F#) in the key signature. The melody consists of a quarter note G4, followed by a triplet of eighth notes (A4, B4, C5) with a '3' above them, then a quarter note D5, a quarter note E5, and a quarter note F#5. The lyrics 'Tzi - nor mer - kha et - nakh - ta' are written below the notes, with a horizontal line under 'nor'.

Tzi - nor \_\_\_\_\_ mer - kha et - nakh - ta

רְבִיעֵי-גָדוֹל



עֲלוּי רְבִיעֵי-גָדוֹל



רְבִיעֵי-וְאֶזְלָא



# עוֹלָה-וַיִּזְרָד

O - leh v' - yo - red

# רְבִיעֵי-קָטָן עוֹלָה-וַיִּזְרָד

R' - vi - 'i ka - ton O - leh v' - yo - red

# צִנּוֹר גַּלְגַּל עוֹלָה-וַיִּזְרָד

Tzi - nor gal - gal o - leh v' - yo - red

פֶּזֶר

Pa - zer

Detailed description: A single staff of music in treble clef. It begins with a quarter note G4, followed by a half note A4, and then a triplet of eighth notes B4, C5, and D5. The triplet is marked with a '3' above it. The final note is a half note D5. A long horizontal line is drawn below the staff, spanning the entire duration of the notes.

קַדְמָא-לְגַרְמִיָּה

Kad - ma l' - gar - meh

Detailed description: A single staff of music in treble clef. It starts with a quarter note G4, followed by a quarter note A4 with a sharp sign (#). This is followed by a half note B4, and then a triplet of eighth notes C5, D5, and E5. The triplet is marked with a '3' above it. The final note is a quarter note D5. A long horizontal line is drawn below the staff, spanning the duration of the notes.

מַה־פָּךְ-לְגַרְמִיָּה

Mah - pakh l' - gar-meh

Detailed description: A single staff of music in treble clef. It starts with a quarter note G4, followed by a quarter note A4 with a sharp sign (#). This is followed by a half note B4, and then a triplet of eighth notes C5, D5, and E5. The triplet is marked with a '3' above it. The final note is a quarter note D5. A long horizontal line is drawn below the staff, spanning the duration of the notes.

שְׁלֵשֶׁת-גְּדוּלָּה

Shal - she - let g' - do - lah

Detailed description: A single staff of music in treble clef. It starts with a quarter note G4, followed by a half note A4, and then a triplet of eighth notes B4, C5, and D5. The triplet is marked with a '3' above it. The final note is a quarter note D5. A long horizontal line is drawn below the staff, spanning the duration of the notes.

## צְנוּרֵית-מִרְכָּא

Musical notation for 'צְנוּרֵית-מִרְכָּא' in treble clef. The melody consists of a quarter note G4, a quarter note A4, a quarter note B4, a quarter note C5 (marked with a '3' above it), a quarter note D5 (marked with a sharp sign), a quarter note E5, a quarter note F5, and a quarter note G5. The lyrics 'Tzi - nor - rit' are under the first four notes, and 'mer - kha' are under the last three notes.

Tzi - nor - rit \_\_\_\_\_ mer - kha

---

## מִרְכָּא-מַהֲפָךְ

Musical notation for 'מִרְכָּא-מַהֲפָךְ' in treble clef. The melody consists of a quarter note G4, a quarter note A4, a quarter note B4, a quarter note C5, a quarter note D5, a quarter note E5 (marked with a sharp sign), and a quarter note F5. The lyrics 'Mer - kha' are under the first three notes, and 'mah - pakh' are under the last three notes.

Mer - kha \_\_\_\_\_ mah - pakh

---

## סוּף פֶּרֶק:

Musical notation for 'סוּף פֶּרֶק:' in treble clef. The melody consists of a quarter note G4, a quarter note A4, a quarter note B4, a quarter note C5 (marked with a '3' above it), a quarter note D5, a quarter note E5, a quarter note F5, a quarter note G5, and a quarter note A5. The lyrics 'Sof' are under the first note, 'pe' is under the second note, and 'rek.' is under the eighth note. There are hyphens under the third, fourth, fifth, and sixth notes.

Sof \_\_\_\_\_ pe - - - - rek. \_\_\_\_\_

---